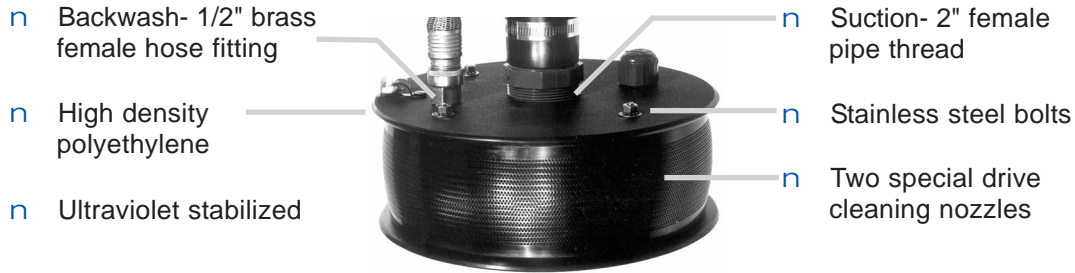


SCS2 50 gpm Self-Cleaning Strainers



How these strainers work.

A small amount of water is returned from the discharge side of the pump to the strainer. Inside, two special nozzles spray against the screen, causing it to revolve. Any debris (i.e. algae, aquatic plants, or leaves) attracted to the screen is blasted off every half revolution. Strainers operate in any position. Require only 35 psi to operate.

SCS2



Plastic screen .062" holes

Available with two screen options

SCS2-A



Epoxy coated aluminum screen .075" holes

Model Number	Strainer Capacity	Capacity m3/hour	GPM to Backwash	Backwash Pressure	Supply Line Size	Screen Diameter	Screen Height	Weight
SCS2	50 gpm	11	5	35 psi	5/8"	10.5"	3.5"	5 lb
SCS2-A	50 gpm	11	5	35 psi	5/8"	10.5"	3.5"	5 lb

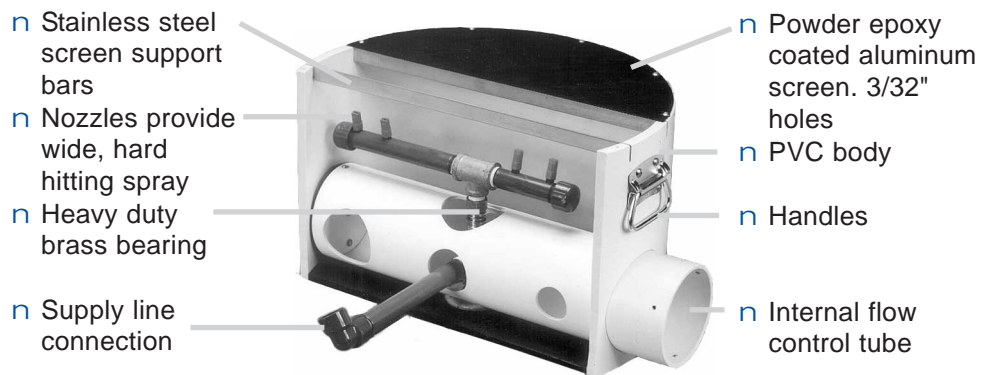
Shallow Water Self-Cleaning Strainer



patent pending

For use in:

- n Rivers
- n Streams
- n Ditches



The Shallow Water Self-Cleaning Strainer is used where there is a consistent source of water which is at least 6 inches above the top of the screen. The internal spray lifts the debris off the screen and the moving water carries the material away from the strainer. These strainers can be used with Sure-Flo foot valves.

Model Number	Strainer Capacity	Suction Line Size	GPM to Backwash	Backwash Pressure	Supply Line Size	Strainer Diameter	Strainer Height	Weight
SWS24	625 gpm	6"	32	60 psi	1.5"	25"	15"	64 lb
SWS30	975 gpm	8"	40	60 psi	1.5"	30"	16"	104 lb